

- 04 INTRO
- 06 VISION & MISSION
- 07 HISTORY
- 08 MAIN BUSINESS

IP BUSINESS

- 12 Intellectual Property Finance
- 15 Intellectual Property Transactions
- 16 Intellectual Property Commercialization

IP TALENT TRAINING

- 21 Creative Invention Education for Primary and Secondary Students
- 21 Youth Invention Creativity Competition
- 22 Training Intellectual Property Personnel
- 23 Online Intellectual Property Education

IP CULTURE DEVELOPMENT

- 26 Developing Invention Culture at Home and Abroad
- 28 Global Expansion of Korean Intellectual Property and Culture

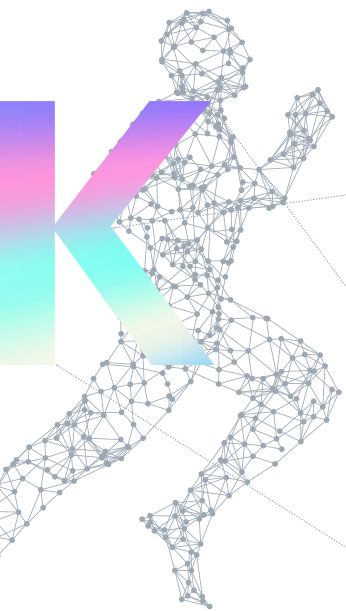


**A GLOBAL INSTITUTION
LEADING THE INNOVATION
ECONOMY THROUGH
INTELLECTUAL PROPERTY**

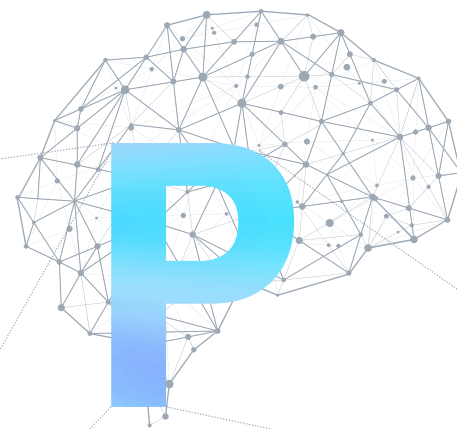
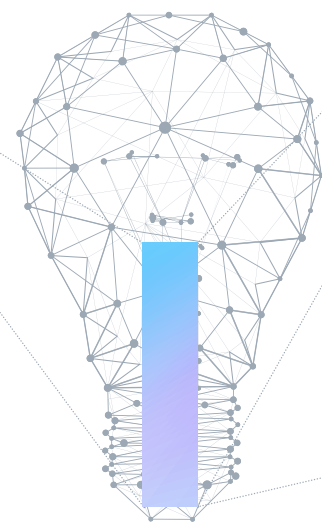
Korea Invention
Promotion Association

KIPA



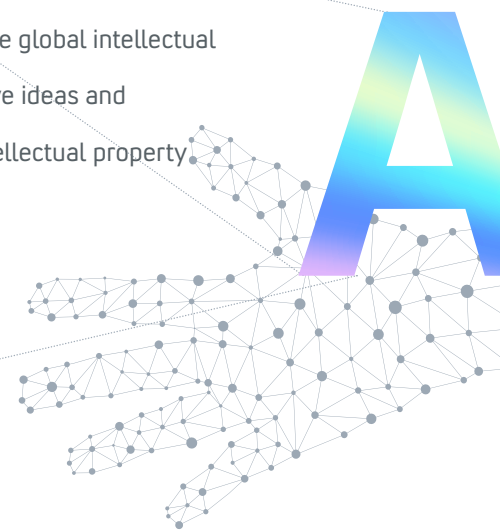


Leading the 21st Century Knowledge-Based Society KIPA

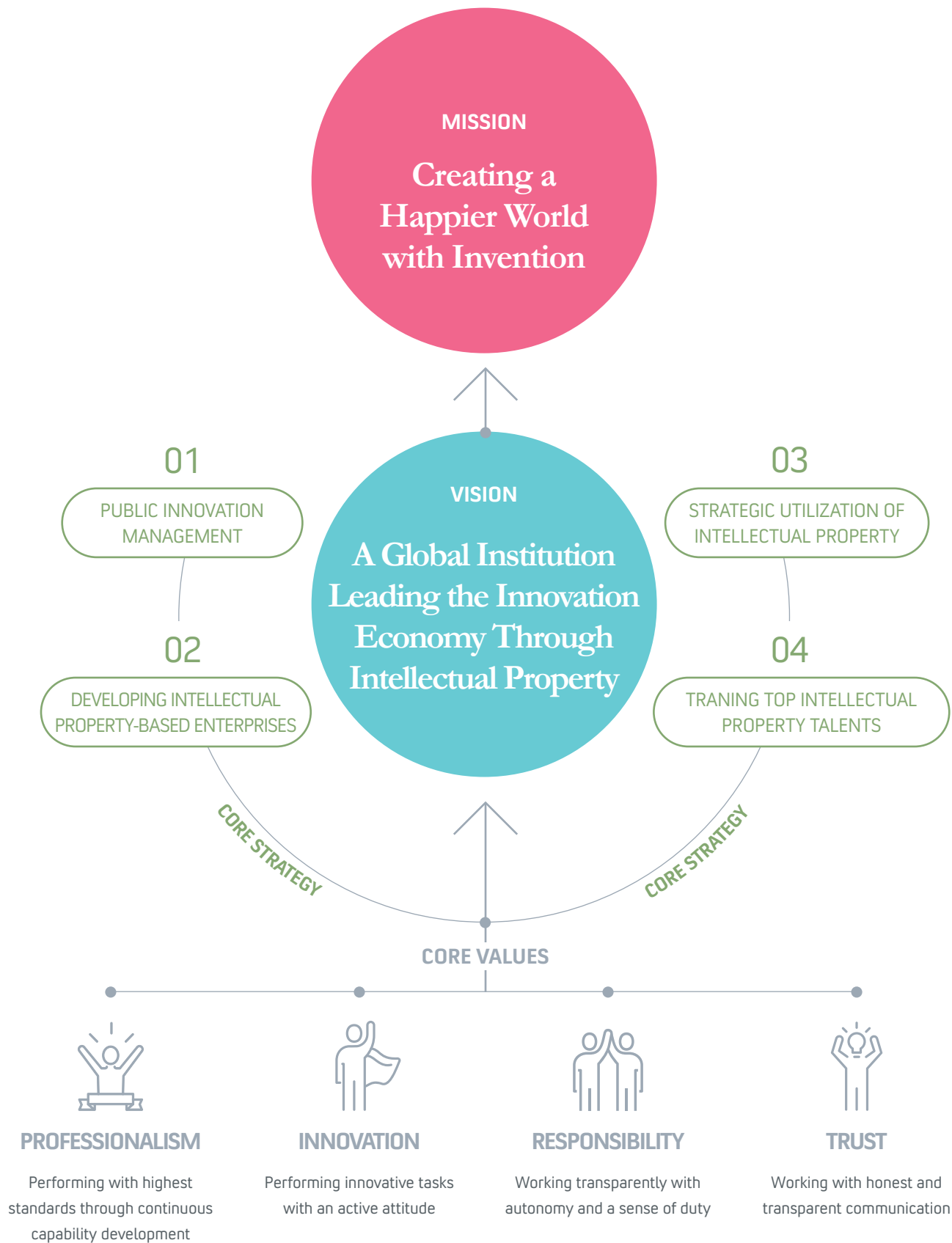


**Creating
a new future
through intellectual
property with KIPA
by your side**

In an era when everything you imagine can become a reality, invention and innovation are the key to our future and national competitiveness. We will lead the global intellectual property culture by cultivating the creative ideas and imaginations of people as the leading intellectual property global institution for professionals.

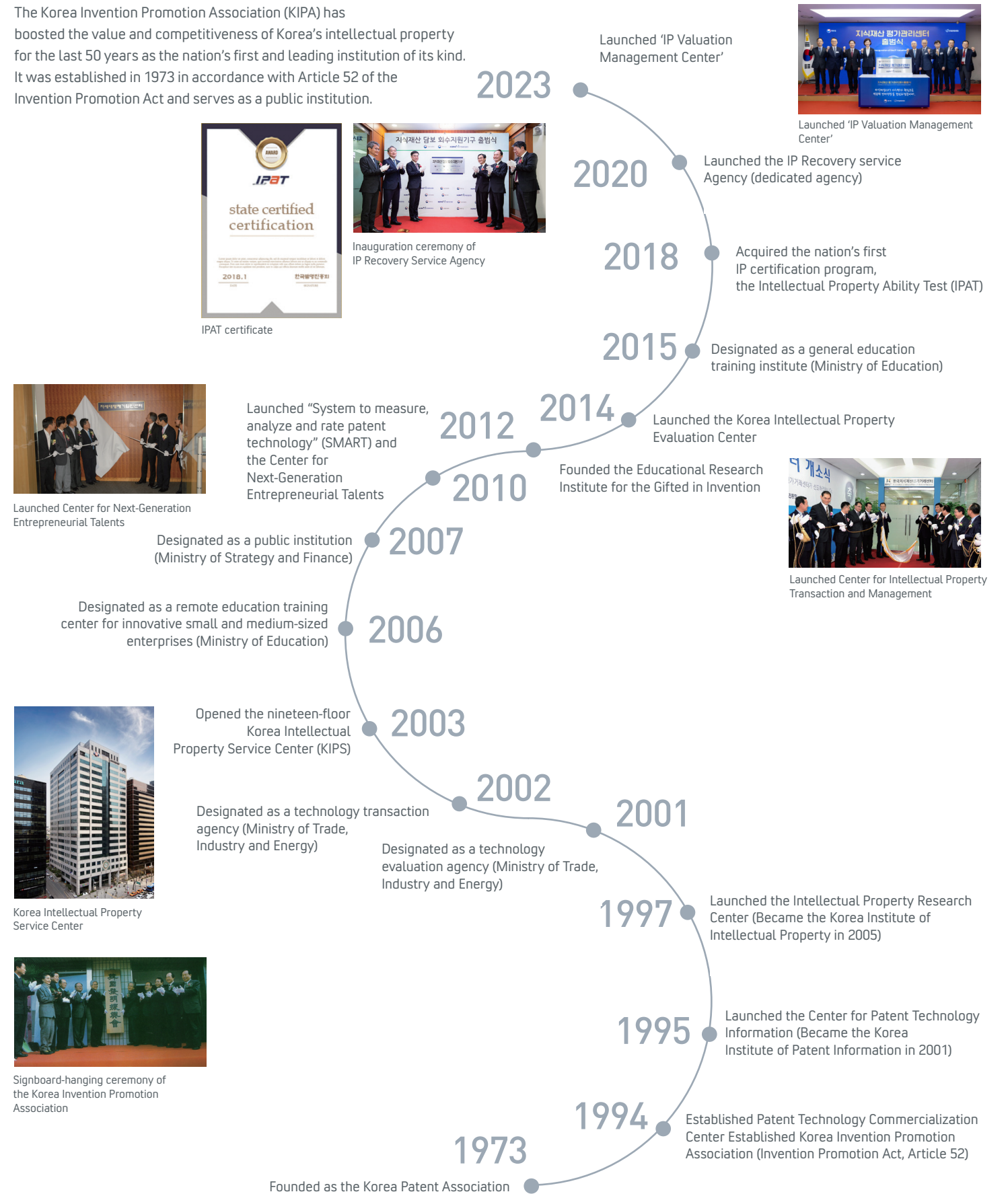


VISION & MISSION



HISTORY

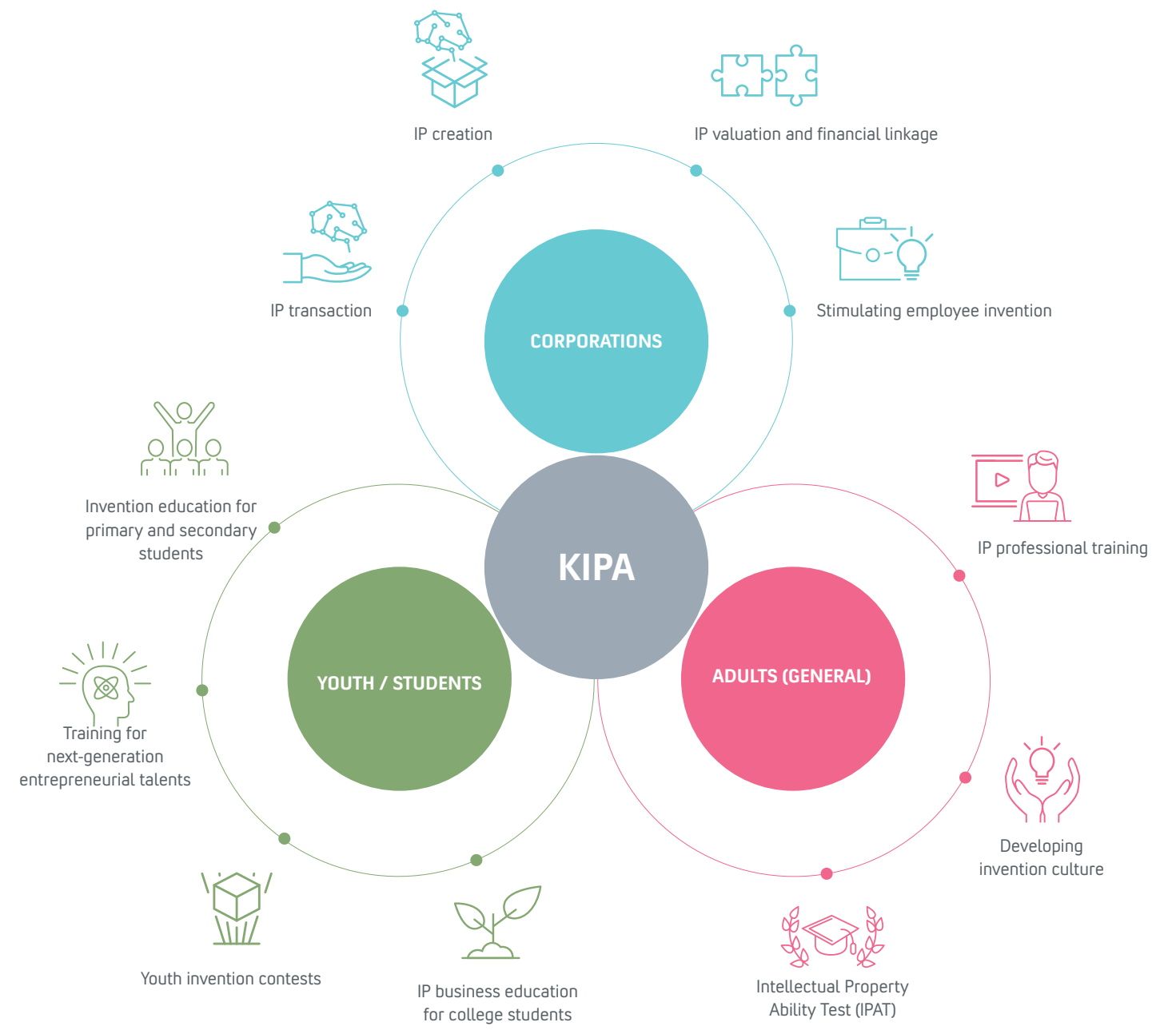
The Korea Invention Promotion Association (KIPA) has boosted the value and competitiveness of Korea's intellectual property for the last 50 years as the nation's first and leading institution of its kind. It was established in 1973 in accordance with Article 52 of the Invention Promotion Act and serves as a public institution.



MAIN BUSINESS



MAIN BUSINESS



**A GLOBAL INSTITUTION
LEADING THE
INNOVATION
ECONOMY THROUGH
INTELLECTUAL
PROPERTY**

Korea Invention
Promotion Association



**IP
BUSINESS**

**Creating the
future of
corporations
with intellectual
property**

Intellectual property is a key asset for determining the sustainable growth and competitiveness of corporations.

Creative ideas from business must be recognized as an important asset through proper evaluation and should be actively traded in the market.

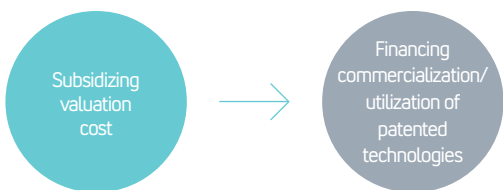
The Korea Invention Promotion Association will help stimulate the economy by building a healthy IP business ecosystem through a virtuous cycle of intellectual property.

INTELLECTUAL PROPERTY FINANCE

01

Intellectual Property Valuation Support

We subsidize the cost of commercialization related valuation, performance analysis, and business feasibility, along with valuation for financial linkage such as guarantee, collateral loans, and investments using intellectual property (including registered/applied patents). Those funds can be utilized in IP finance, technology transactions, in-kind investments, technology certifications and more, financing commercialization for small and medium-sized enterprises and stimulating the utilization of patented technologies.



About the Intellectual Property Valuation Management Center

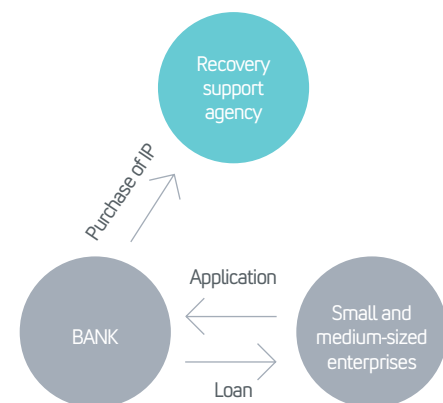
The Intellectual Property Valuation Management Center is a legal institution designated by the Korean Intellectual Property Office, established under Article 31-6 of the Invention Promotion Act. The IP Valuation Management Center performs quality reviews for samples and feasibility examinations by external request and provides research and education as well as data services related to intellectual property valuations.

IP Valuation Quality Management

The Intellectual Property Valuation Management Center conducts quality reviews of intellectual property valuation reports, feasibility examinations, research, and education for IP Valuation Institutions aiming to enhance reliability and credibility in the assessment of intellectual property.

IP Purchase and Utilization of pledged as collateral

If a company defaults on an IP collateral loan, we purchase the IP through a recovery support agency, which is funded by the government and financial institutions. Also, we stimulate the transaction of IP collateral loans by reducing the risk of financial institutions through monetization of purchased IP.



The Valuation Information System (IP-Hub)

The Valuation Information System is a comprehensive platform that integrates and manages valuation reports and related data for efficient and systematic examination and management of assessments, particularly for inventions. This system facilitates online application and submission for the Intellectual Property Valuation Support Program. The valuation reports registered in the system are utilized for quality control in the assessment of inventions. Additionally, the collected valuation information is analyzed and processed to provide foundational reference data for key variables in the assessment of inventions.



iphub.or.kr

System to Measure, Analyze and Rate Patent Technology (SMART5)

SMART5 provides online patent analysis and evaluation results of registered patents in Korea, the US, Europe, China, and Japan in real-time at low cost through an evaluation model built on objective and quantitative patent data.

Since its launch in 2010, SMART5, has been utilized in approximately 1.7 million cases (as of 2023). It has emerged as a leading patent evaluation system in South Korea, taking the forefront in popularizing patent assessment.



smart.kipa.org

SMART5 Utilization Cases

IP Finance

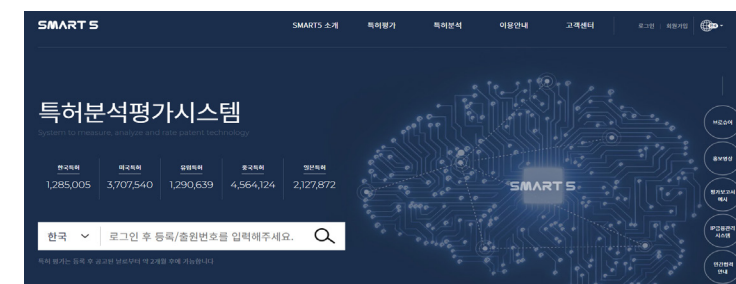
Operational credit guarantee products linked with SMART5 ratings by organizations like the Credit Guarantee Fund since 2013

Patent Portfolio Management

Identification of patents eligible for abandonment based on SMART5 ratings to reduce annual fees for held patents

Technology Transfer

Discovery of enterprises with potential interest in SMART5 through the selection of outstanding patents and analysis of similar patents via SMART5 evaluations



Quality Reviews

Randomly and selectively extracting samples of valuation reports issued by IP Valuation Institutions, followed by quality checks on the extracted reports

Feasibility Examinations

Investigating whether valuation reports issued by IP Valuation Institutions were conducted in accordance with valuation criteria. This is carried out at the discretion of the Commissioner of the Patent Office or upon request from stakeholders.

Research

Developing and disseminating valuation guidelines for IP to enhance the reliability and professionalism of the valuation market

Education for IP Valuation Institutions

Developing and implementing practical training programs to strengthen the capabilities of practitioners in IP Valuation Institutions.

INTELLECTUAL PROPERTY TRANSACTIONS

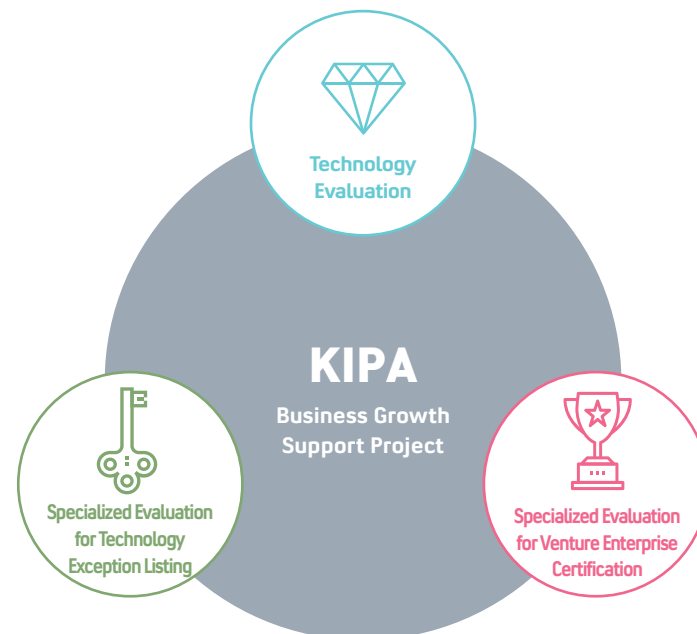
Technology Evaluation

The Business Growth Support Office is a specialized organization in convergence consulting services, assisting companies and individuals with exceptional technology from start-up phase to listing. The Korea Invention Promotion Association was designated as a specialized assessment institution for venture enterprise certification in 2021 and KOSDAQ technical exception listing in 2022. Our internal team comprises experts, including lawyers, engineering Ph.D holders, and science Ph.D holders, covering various fields

such as medical bioscience, electrical engineering, electronics, semiconductors, ICT, and machinery. Simultaneously, we have secured a group of over 500 external experts with knowledge and experience from universities, research institutes, and various industries. These internal and external experts conduct technology consulting for diverse purposes, including special listings, tangible asset contributions, technology transactions (transfers), and fundraising, for technologies held by corporations and individuals.



Comprehensive assessment of the technological, legal, market, and business aspects of a target technology, providing evaluation results in terms of value, grade, opinion, or score



Specialized assessment to provide exceptional listing opportunities on the KOSDAQ market for companies possessing technological expertise and future growth potential

Specialized evaluation to discover and expand innovative and growth-oriented, technology-intensive small and medium-sized enterprises, providing momentum to the industry



Revitalizing the Intellectual Property Market

The Intellectual Property Transfer Office of the Korea Invention Promotion Association helps stimulate intellectual property transactions through the distribution of unused IP by connecting supply and demand, nurturing the establishment of a healthy intellectual property ecosystem.

IP Transaction Consultants

Provides support for the entire process of intellectual property transactions ranging from consultation and technology matching to mediation, negotiation, and contract signing with the nation's top experts including engineering Ph.D.s, technicians, and patent attorneys

Government-owned Patent Transaction Support

Consulting and contract support for individuals and businesses aiming to commercialize inventions (patents, utility models, etc.) created by government officials in the course of their duties (referred to as "government-owned patents") in fisheries and other industries

IP-Market (www.ipmarket.or.kr)

Online intellectual property trading platform that provides a technology database (supply & demand) and online consultation feature that can be utilized in private and public sectors among individuals, small and medium-sized enterprises, and universities that are interested in intellectual property transactions

IDEARO (www.idearo.kr)

A representative open innovation platform enabling everyone in the nation to create, transact, and utilize ideas with infinite potential value! IP Transaction consultants support the entire process, from project discovery to negotiation, contract signing, and IP consulting, ensuring that businesses and citizens can transact ideas safely and reasonably.



Intellectual Property Commercialization Support for Start-ups and SMEs

The Department of Intellectual Property Commercialization utilizes internal and external expert groups to support the comprehensive process of commercializing patent technologies held by SMEs, covering product development to market support and fundraising.



1 IP-C&D* Strategic Support

Supporting open innovation solutions to handle technical challenges in the commercialization phase of IP-based SME products. We accomplish this through the OPIS (Open Patent Intelligence Search) method, enhancing existing products, and strategizing for the development of new products.

* IP-C&D (Connect&Development): An open research and development approach that combines internal and external intellectual property to develop innovative products.

2 Public-Private Partnership of Intellectual Property Strategic Support

Start-up companies with innovative technology ideas, and providing support for private investment and IP product commercialization packages.

- Private Sector : Serving as the CIPD* for start-up companies, offering early-stage investment, and providing IP Consulting
 - Public Sector : Supporting IP rights acquisition, IP product commercialization strategies and validation, global expansion and attracting investments support.

* Chief Intellectual Property Officer(CIPO): The top executive overseeing the strategic planning and management of a company's intellectual property rights

3 Carbon Neutrality Sector Idea Transaction Commercialization Support

Supporting innovation in environmentally friendly technology and products for small and medium-sized enterprises by utilizing creative ideas from the public to address climate change

4 Public-Private Market Support

Public market support (designation of innovative products based on excellent patents, priority purchase recommendation for outstanding inventions) and private market support (crowdfunding support) for SMEs with outstanding IP-based products

5 Investment Attraction Seminars

Operating Investor Relations (IR) pitching and consulting by technical fields or regional hubs to provide funding opportunities for IP-based start-ups

Locally Tailored Intellectual Property Creation

The Regional Intellectual Property Office provides consulting and other services for intellectual property creation and supports regional IP Small Giants through RIPC in Seoul and other regions.



Operation of Regional Intellectual Property Centers

Based on RIPC across the country, we promote the creation and use of intellectual property, contributing to strengthening the competitiveness of small and medium-sized enterprises(SMEs) and revitalizing the local economy. Professional consultants provide one stop comprehensive intellectual property services for SMEs, individual inventors, and students.

Overseas IP-Based Expansion Support (Global IP Star Companies)

Selected companies receive comprehensive support for three years, including securing international intellectual property rights, patent and design map, design and brand development, IP management diagnosis and establishment, production of patented technology promotional videos, and product design mock-up.

**A GLOBAL INSTITUTION
LEADING THE
INNOVATION
ECONOMY THROUGH
INTELLECTUAL
PROPERTY**

Korea Invention
Promotion Association



**IP
TALENT
TRAINING**

**Leading
the world
by training
creative
convergence
talents**

Human resources are the driving force behind the creation of intellectual property and are the key to future growth.

As a leading intellectual property education institution, the Korea Invention Promotion Association has been producing creative convergence talents who will lead in Korea and beyond.

We are committed to making this world a happier place through invention by making the following efforts: providing specialized lifecycle-based intellectual property education; supporting youth inventors and training next-generation entrepreneurial talents and intellectual property professionals.

CREATIVE INVENTION EDUCATION FOR PRIMARY AND SECONDARY STUDENTS



Establishment of Invention Education Infrastructure

We build an infrastructure to provide systematic professional education for elementary, middle, and high school students, teachers, and parents interested in invention and intellectual property. Our goal is to promote balanced invention education nationwide.

Next Generation Young Entrepreneurs Education Institute

In collaboration with KAIST and POSTECH, the Next Generation Young Entrepreneurs Education Institute provides specialized education in intellectual property, an entrepreneurial spirit, future technologies, humanities education, and communication technology for the cultivation of inventive future CEOs.

Vocational High School Invention Education

Providing specialized education on invention and patents integrated with the student's major and technical education for students in Meister High Schools and Specialized High Schools, aimed at cultivating industry-oriented technical talents with both intellectual property literacy and practical skills

Metropolitan Invention Education Support Centers

Through our regional invention education support centers, we support local invention education centers and provide experiential and in-depth invention education. This aims to expand invention education opportunities and promote a culture of invention among local elementary, middle, and high school students, teachers, and the general public.



IP Meister Program

Offering concentrated education and professional consulting for students in Meister High Schools and Specialized High Schools to foster future technology professionals with the innovative capabilities required by industry, with a focus on creating and utilizing intellectual property

Invention Education Centers

Our 207 invention education centers in 17 provinces nationwide offer systematic and specialized invention education opportunities for elementary, middle, and high school students and the youth. These programs utilize the latest content such as AI, coding, and maker activities.

Cultivating Creative, Inventive Talents

Providing systematic invention and intellectual property education for elementary, middle, and high school students to nurture future creative and inventive talents with problem-solving skills, innovation capabilities, and expertise in technology and intellectual property

Young Inventors Program (YIP)

Providing in-depth education on invention and patents, expert consulting for students and the youth with creative invention ideas, and fostering young inventors equipped with creative problem-solving skills and the ability to utilize intellectual property

YOUTH INVENTION CREATIVITY COMPETITION 02

Holding a high-level and reputable invention and creativity competition for the youth to discover and nurture outstanding talents, awarding young inventors and exhibiting excellent inventions to promote a nationwide culture of invention

Korean Student Invention Exhibition

Discovering, showcasing, and awarding outstanding invention ideas from the youth to enhance invention awareness and promote a nationwide culture of invention, this exhibition is the leading youth invention competition in Korea. Winners receive special benefits such as patent applications and training for technology commercialization.

Youth Invention Festival

Combining the Youth Invention and Creativity Competition with an exhibition of outstanding inventions, along with various creative invention experience programs, this event provides a new experience in creativity and invention for students, parents, and teachers. It is the largest comprehensive event for youth invention in Korea.

Korean Student Creativity Championship

A creativity competition where students form teams to express, create, and solve on-the-spot challenges, fostering creative problem-solving skills, a spirit of innovation, critical thinking, and communication abilities

National Elementary and Middle School Invention Writing and Cartoon Contest

The most historically significant youth contest in Korea that contributes to the cultivation of creative thinking and expressive skills through creative writing and drawing activities related to youth inventions, promoting the culture of invention

TRAINING INTELLECTUAL PROPERTY PERSONNEL

Professional Training Program

The Korea Invention Promotion Association fosters practical intellectual property experts through various education programs and supplies excellent talent to universities and companies, leading the intellectual property industry.

Intellectual Property Ability Test (IPAT)

The only nationally certified practical intellectual property competency examination organized by the Korea Invention Promotion Association. Anyone interested in intellectual property can take the test, which measures fundamental and practical skills in all areas of intellectual property.

IP-Focused Universities for Developing Intellectual Property Professionals

Designation of regional IP-focused universities to cultivate specialized intellectual property professionals, promoting sustainable growth for innovative local companies

Intellectual Property Education in Colleges and Graduate Schools

Offering professional instructors, standardized curriculum, and textbooks to expand university-level intellectual property education

Campus Patent Universiade Competition

Industry-academia cooperation program that trains in-demand intellectual property talents and supplies the creative ideas of colleges to relevant industries

03

ONLINE INTELLECTUAL PROPERTY EDUCATION

04



IP Academy

IP Academy (www.ipacademy.net), a national intellectual property education platform, offers various contents and online education for free, raising awareness of the importance of intellectual property and providing lifelong intellectual property education to all citizens.



www.ipacademy.net

Intellectual Property Credit Bank System (cb.ipacademy.net)

Distance learning-based degree program in intellectual property, which is aimed at training intellectual property professionals and offering lifelong education with theories and practical education in intellectual property studies

TARGET | Non-professionals and college students (universities with credit exchange agreement)
CURRICULUM | 21 major courses including Introduction to Intellectual Property and Patent Law



cb.ipacademy.net

IP Campus

We provide offline practical training in all fields of intellectual property, including patents, trademarks, designs, and copyrights, targeting patent managers, technology developers, researchers, and the general public in domestic companies and research institutes.



www.kipa.org/ipcampus

CURRICULUM	MAJOR CONTENTS
General Education	Systematic, specialized practical training for future intellectual property professionals that covers the overall intellectual property system, management practices, information search, infringement lawsuits, foreign patent laws, etc.
Special Education	Short-Term training IP convergence in related fields (corporate branding, business strategy, etc.)
Core Education	Intensive short-term training on recent issues and challenges in the IP field
Corporate Group Outsourced Training	Customized education based on planning and analysis of educational needs of domestic companies, institutions, and universities
Youth Education	Development and operation of in-house invention education programs for elementary school students (3rd to 6th grade)

- Layman**
Education for anyone interested in intellectual property
TARGET | Anyone seeking online intellectual property education
CURRICULUM | Protecting My Own Intellectual Property, Do's and Don'ts of Employee Invention, etc.
- Companies & Univ.**
Online intellectual property education for groups, specifically employees of companies and research institutes, college students, and graduate students
TARGET | Companies, research institutes, organizations, associations, public institutions, and universities seeking group education
CURRICULUM | Group B2B education including technology innovation utilizing TRIZ(Theory of Inventive Problem Solving), IP flip learning (on/off-line) for corporations
- Youth**
E-learning group invention education for elementary and secondary school students aimed to training invention talents of the future
TARGET | Elementary/middle/high schools and invention education centers nationwide seeking online education on intellectual property
CURRICULUM | Inventions that changed the world, The future world and inventions
- Teacher**
A distance learning-based training for teachers to boost their capabilities of invention education
TARGET | Elementary and secondary school teachers and public education officials nationwide
CURRICULUM | Vibrant Creativity Class: TRIZ (Theory of Inventive Problem Solving), Class Instruction Guidelines for Intellectual Property General, etc.

**A GLOBAL INSTITUTION
LEADING THE
INNOVATION
ECONOMY THROUGH
INTELLECTUAL
PROPERTY**

Korea Invention
Promotion Association



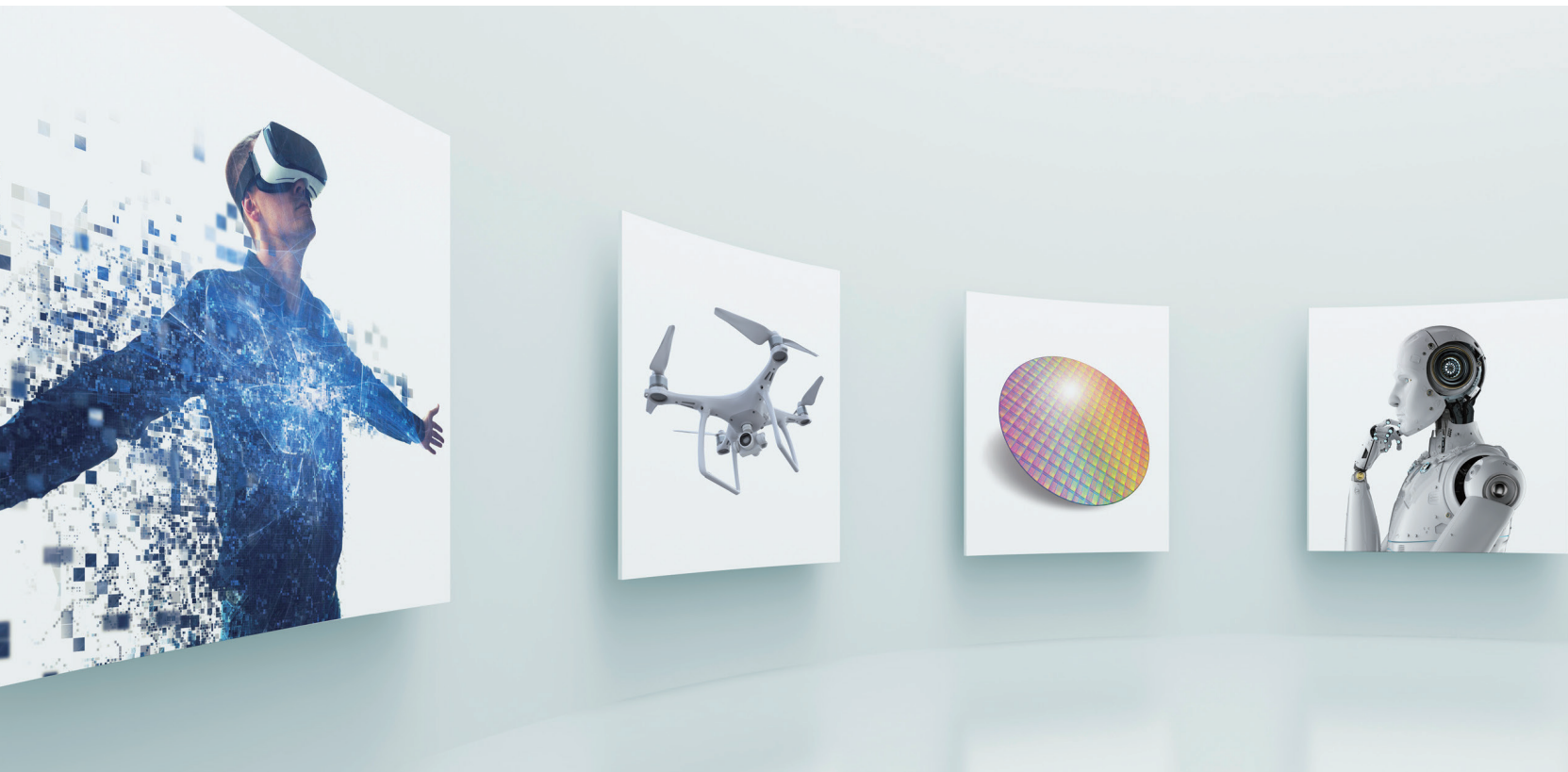
**IP
CULTURE
DEVELOPMENT**

**Tapping into
the global
market with
value and
a culture of
invention**

The Korea Invention Promotion Association has been a leader in expanding a positive intellectual property culture to encourage citizens to engage in invention activities, raise awareness of the importance of intellectual property, and boost the value of intellectual property.

Furthermore, as a global intellectual property institution, KIPA has been taking the lead in developing and sharing the intellectual property knowledge of Korea in order to strengthen its export base and to ensure the innovation and growth of the national economy by developing an international invention culture to stimulate the global market.

DEVELOPING INVENTION CULTURE AT HOME AND ABROAD



Developing Intellectual Property Culture at Home and Abroad

Through exhibitions and events, we help promote and commercialize outstanding inventions and contribute to expanding invention culture and boosting inventors' morale.

Invention Day Ceremony | We award outstanding inventors with the Order of Industrial Service Merit, Prime Minister's Award, and President's Award.

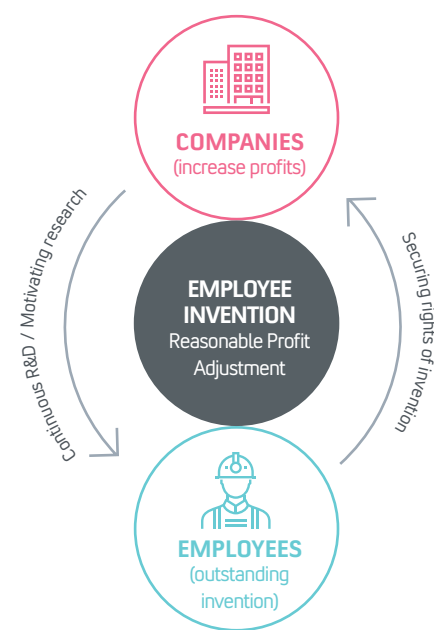
Korea Intellectual Property Exhibition | Outstanding domestic and overseas intellectual property-related products are displayed at the exhibition, including those protected by patents, designs, and trademarks.

Stimulating Employee Inventions

KIPA encourages companies to introduce the employee invention system by providing firms with professional consultations and certifications if they offer compensation for employee inventions and support voluntary compensation culture.

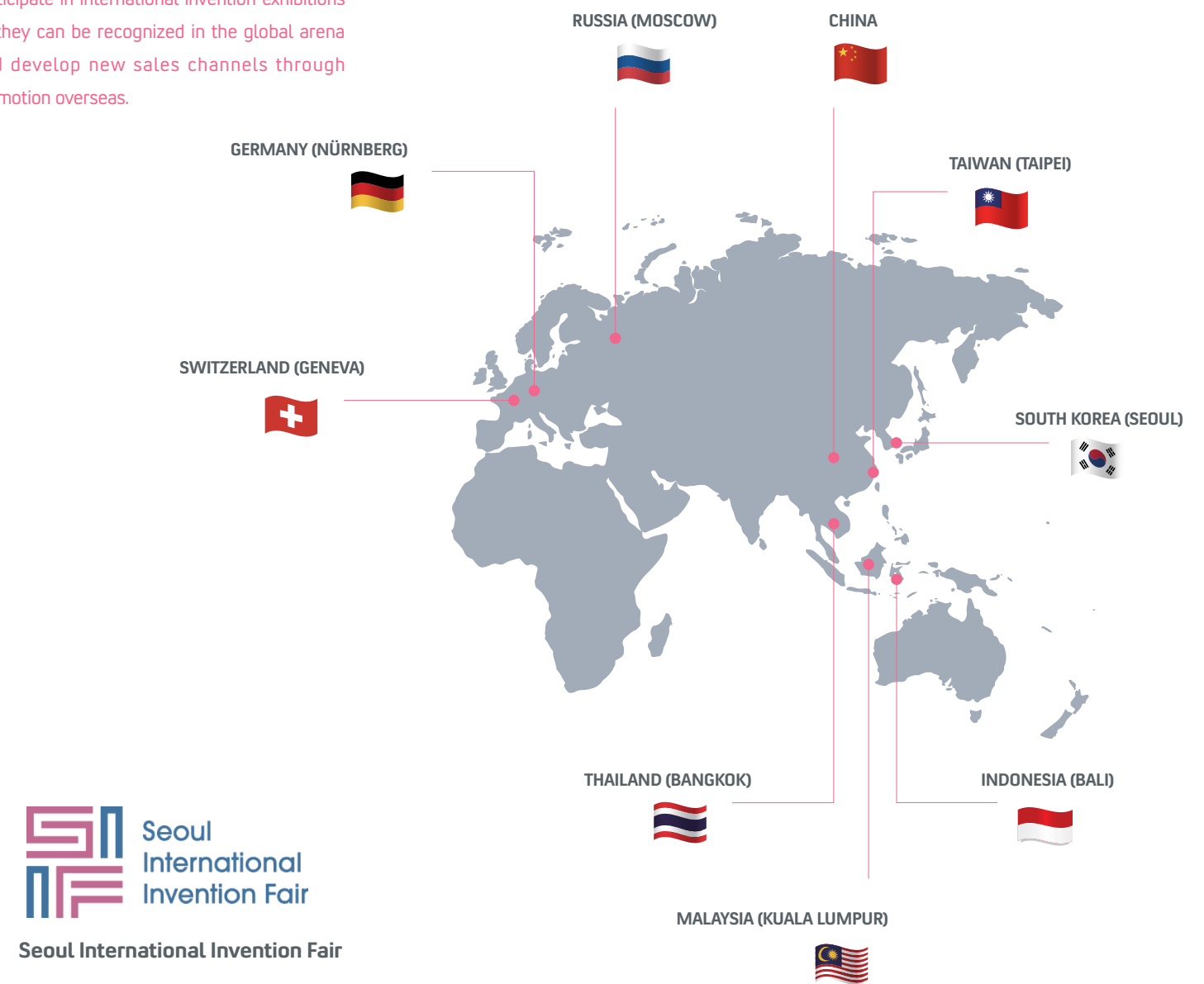
Employee Invention System

The system allows companies to acquire new technologies and increase profits, as they are entitled to inventions created by their employees in return for sufficiently compensating staff for their work.



Participated in International Invention Exhibition

Since 1982, we have sponsored outstanding entrepreneurs and individual inventors to participate in international invention exhibitions so they can be recognized in the global arena and develop new sales channels through promotion overseas.



Seoul International Invention Fair
Seoul International Invention Fair

GLOBAL EXPANSION OF KOREAN INTELLECTUAL PROPERTY AND CULTURE



Global IP Educational Content Development and Distribution

We are developing and disseminating global intellectual property educational content and supporting the enhancement of intellectual property capabilities in developing countries.

Overseas Intellectual Property Consulting Business

We provide tailored consulting services on intellectual property laws, policies, and systems by considering the needs of foreign countries. By sharing our experience and knowledge in building advanced intellectual property infrastructure in Korea, we contribute to the intellectual property-based economic development of the recipient countries.

Korean Intellectual Property Wave and Culture

We aim to raise awareness of intellectual property rights around the world, contribute to strengthening corporate competitiveness, and spread Korean intellectual property and culture through IP Panorama 2.0 and other global intellectual property educational contents.

Global IP Educational Contents

IP Panorama 2.0 / IP Ignite / IP Expedite / IP Insight / IP Protection Contents / Getting Creative with Pororo Animation, etc.

Global IP Sharing Project

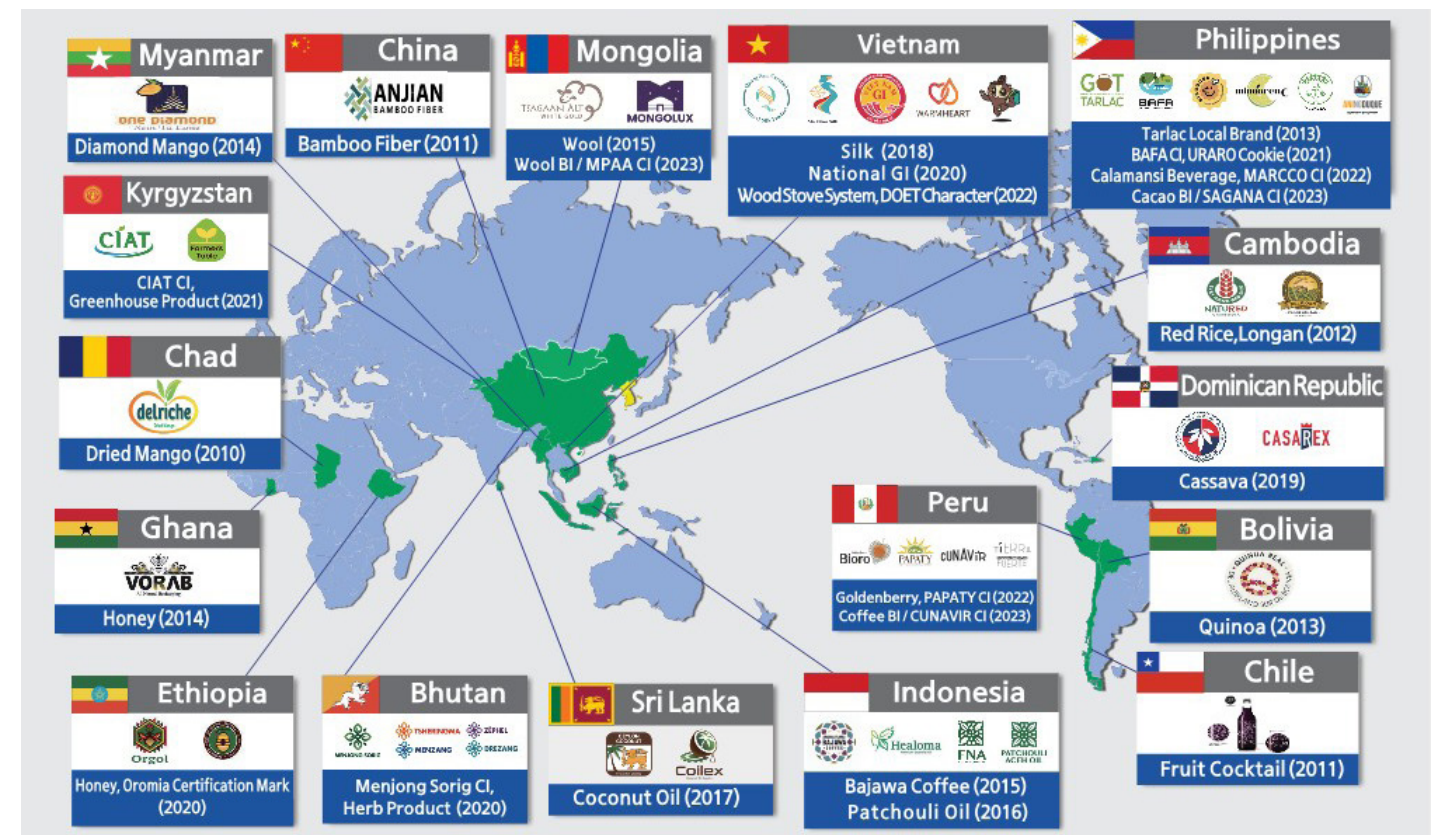
We contribute to the global economy by improving the quality of life and creating jobs in the least developed and developing countries through appropriate technology and brand development by utilizing patent information, strengthening our position as a global leader in intellectual property rights.



Global IP Sharing Project - Appropriate Technology Development



Global IP Sharing Project - Brand Development





**A GLOBAL INSTITUTION
LEADING THE INNOVATION
ECONOMY THROUGH
INTELLECTUAL PROPERTY**

Korea Invention
Promotion Association

**Leading the
21st Century
Knowledge-
Based Society
KIPA**

The Korea Invention Promotion Association will do its utmost to strengthen national competitiveness by boosting the value of intellectual property, training top intellectual property talents, and expanding intellectual property culture as the premier global intellectual property institution.



Korea Intellectual Property Center, 131 Teheran-ro,
Gangnam-gu, Seoul, KOREA

Tel. 82.2.3459.2800

www.kipa.org

A GLOBAL INSTITUTION LEADING THE INNOVATION ECONOMY THROUGH INTELLECTUAL PROPERTY

Korea Invention
Promotion Association

